

INSTRUCTION FOR BACK-MOUNTING RACETECH 129 SEATS TO ROLLCAGE/CHASSIS

This instruction refers to the following Racetech seat models:

129 Series (RT4129HRW, RT4129WTHR, RT9129HRW, RT9129THR, RT9129WTHR)

Fit the seat into the vehicle using the side-mount brackets provided and adjust to the approximate position of the driver's preference. Drivers are encouraged to trial this seat position at testing and/or track-days and adjust as required. Once the seat position is confirmed, measurements can be taken for fabrication of the adaptor plate. The drawings below are examples of how the right-angled back bracket (supplied) and an adaptor plate (must be fabricated) can be used in a number of configurations to fit to the rollcage tube at the correct height.

FITTING AND FABRICATION DETAILS

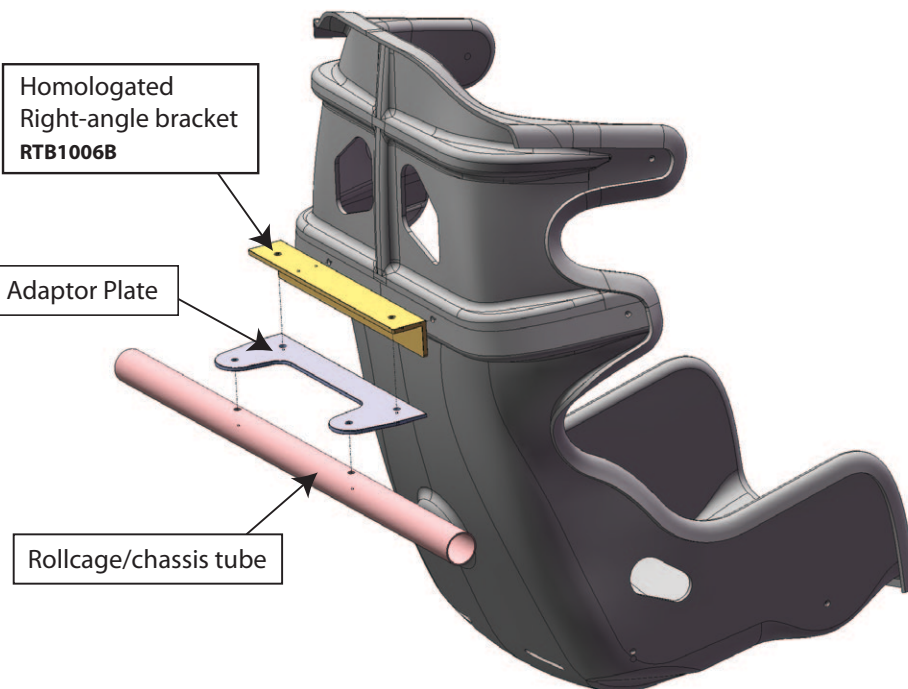
Right-angle bracket to seat - M8 (12.9) cap screws and 22 x 3mm washers supplied.

Right-angle bracket to adaptor plate - two M8 bolts, nuts and washers required.

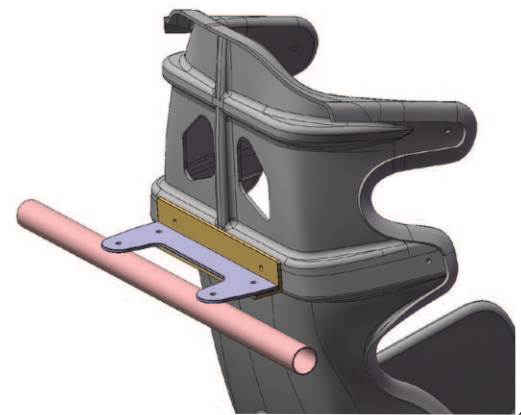
Adaptor plate to chassis - two M8 bolts and washers required.

Adaptor plate - 5mm Aluminium (5083) recommended for fabrication.

POSSIBLE BACK MOUNTED CONFIGURATION (EXPLODED VIEW)



Higher seat mounting position (example)



Lower seat mounting position (example)

